

Universal Management Suite 3

UMS3
Universal Management Suite

Profile

Easy-to-use yet extremely powerful software that allows you to remotely manage your IGEL thin clients so that support costs are kept to a minimum. It is extremely open and network friendly so that it can fit into your organization's existing infrastructure.

Typical uses

Automatically setting up thin clients with the right profile when they first attach to the network, changing the settings of the device or its local protocol clients and software tools, re-imaging devices mid-life when new firmware becomes available, diagnostics and support.

IGEL Universal Management Suite 3 sets the benchmark for the management of modern thin clients. It has a host of features that makes the management of large groups of thin clients with lots of local protocol clients and software tools, spread over large WANs, extremely easy, fast and secure. Supporting a variety of operating systems, databases and directory services like Microsoft® Active Directory, the Universal Management Suite is easy to integrate in every existing environment. All this capability comes free with every IGEL thin client! Bundled in every box you will find a complete and complimentary version of the IGEL Universal Management Suite. When combined with the outstanding IGEL hardware, you have the most advanced thin client solution on the market today.



What are the main benefits of IGEL Universal Management Suite?

Easy-to-use

IGEL Universal Management Suite combines an intuitive user interface with point-and-click simplicity to manage everything on a thin client including all hardware and software settings. No scripting is necessary to control a thin client's configuration. The user interface is very similar to the local system administration console on the thin client, with the addition of some additional remote management functionality. Setup is wizard driven and only takes 20 minutes if the integrated server-based database is used. This means your administrators can be productive very quickly, changes can be made on the fly and errors are minimized.

Open

The IGEL Universal Management Suite server can be run on all popular versions of Microsoft® Windows® Server and Linux. It supports a wide variety of databases including Oracle®, Microsoft® SQL Server 2000®, SQL Server 2005® and PostgreSQL. It can also interface with Active Directory so you can maximize the benefits of your existing management infrastructure. The console is based on Java, making system administration possible from any device with a Java Runtime Environment.

Secure

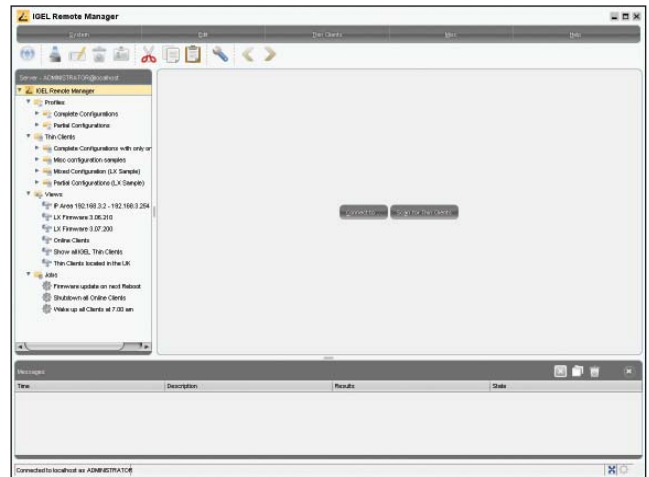
The management infrastructure is extremely secure using encrypted communications (SSL) for both communication between each console and the server and each server with its clients. There is also a secure certificate relationship between each thin client and its Universal Management Suite server, so that an unauthorized server can't ever take control of IGEL thin clients on the network.

Friendly to your network

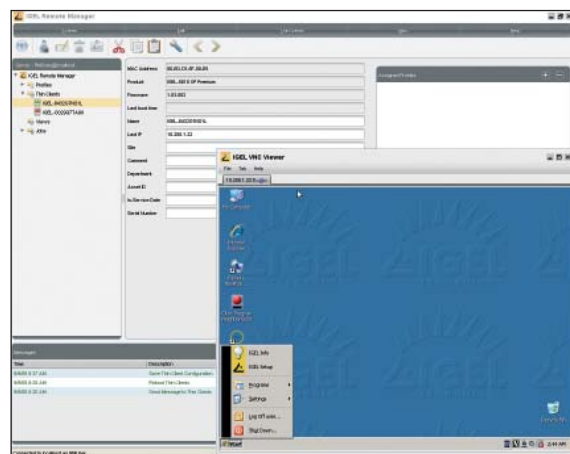
Because IGEL Universal Management Suite uses standard protocols such as HTTP and FTP for communication, you don't need to open additional firewall ports, keeping your network security to a maximum. Sending large images over your WAN can be kept to a minimum through the use of local FTP servers or the Buddy Update feature, which transforms an already updated IGEL thin client into the image source for other local clients on the network.

Robust and reliable

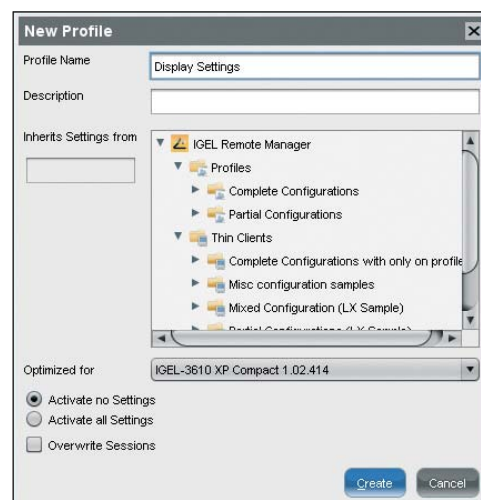
IGEL thin clients find their management server on first connect using standard domain names. They do not use the less reliable method of making a PXE broadcast. In addition, IGEL thin clients come with a Fail Safe update mechanism that means even in the event of a power loss during re-imaging, the client will boot back to its previous good configuration.



IGEL Universal Management Suite - typical screen



A demonstration of 'Shadowing'



An example of profile management



Scalable

IGEL Universal Management Suite cannot only handle thousands of thin clients due to its use of modern SQL databases and a multi-threaded architecture, it can also manage many complex features. The complexity of each feature is taken away due to the point-and-click interface. In addition, IGEL Universal Management Suite can support large or global organizations by allowing multiple system administrators, each with a different span of control and level of authority. Hence support responsibilities can be safely delegated throughout the most complex organizations.

Efficient and productive

IGEL Universal Management Suite greatly boosts support staff productivity. Lights-out management can be achieved using scheduled or reoccurring events and thin clients can be remotely shut down or booted. It also allows IT support to assist users using VNC shadowing of the thin client's screen. With this approach, problems can be identified and solutions demonstrated remotely.

Efficient management of large organizations

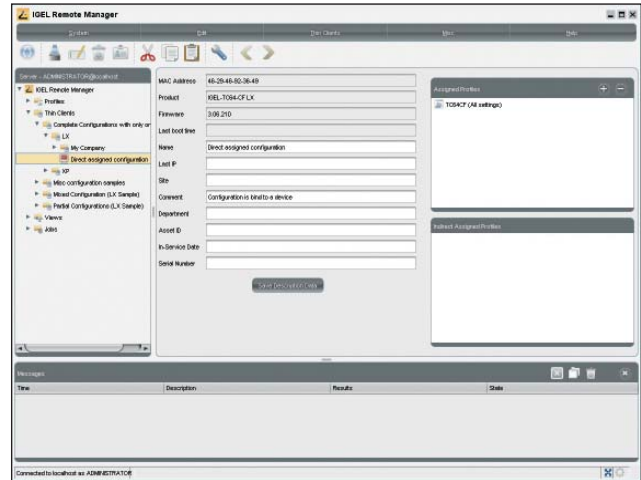
Many thin clients can be identified and changed at once using grouping and profiles. By applying a profile to a group of thin clients, the administrator can change the settings of whole departments with a few mouse clicks. When employees are relocated to another department, the administrator can easily apply the new settings with drag-and-drop simplicity. In order to identify clients that are spread over several groups, the administrator can define additional views.

Fast roll-out and changes

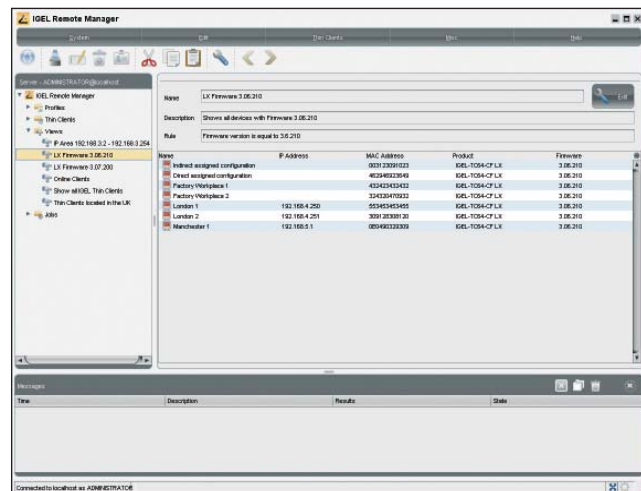
IGEL thin clients can be automatically assigned to a group and given a profile on first connect. This can be done by reading into IGEL Universal Management Suite a CSV file, supplied by IGEL, containing the thin clients' MAC addresses. The thin clients can then be automatically assigned to a group and profile using these MAC addresses or other assignment rules such as their sub-net location. This makes the setup of an IGEL thin client no more complex than taking it out of the box and plugging it in!

Reporting

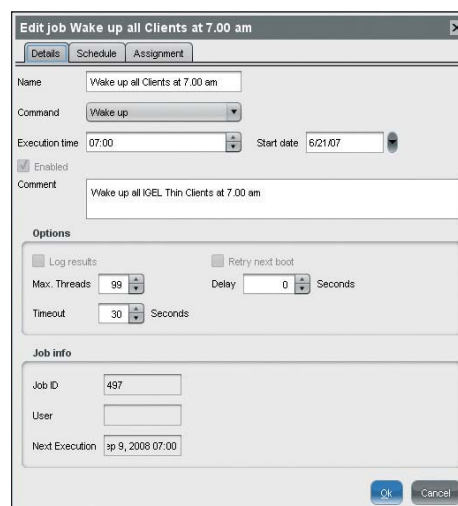
IGEL Universal Management Suite has powerful reporting features that allow system administrators to build complex reports that greatly assist in support management. These reports help to detect problems and allow the administrator to track all configuration changes.



This shows the thin client's current properties as well as profiles assigned to it



An example of a user configurable view



Re-occurring scheduled jobs can be configured to not execute on certain dates, e.g. public holidays

Universal Management Suite 3 – Specifications

Software

Full control of Universal Management Server from virtually anywhere

The Universal Management Console (graphical user interface) can be installed on any machine, not necessarily the machine hosting the Universal Management Server

Conveniently control multiple Universal Management Servers from one console

Maintain network security through secure HTTPS and SSL transactions between Universal Management Server and Console

The Universal Management Console can connect from any PC or thin client to Universal Management Servers

Unique multi-platform support through Java

Currently tested platforms include the following:

Universal Management Server

Microsoft® Windows® Server™ 2000/2003/2008 R2

All common Linux distributions

Universal Management Console

Microsoft® Windows® 2000, Microsoft® Windows® XP, Microsoft® Windows® Vista®, Microsoft® Windows® 7

All common Linux distributions

Security features

SSL communication

User / password authentication

Active Directory groups can be used for access rights management

Local client certificates

Full and reliable backup functionality

Failover mode

Thin client management and configuration

Full, remote configuration of all client settings

Shadowing via VNC

Remote shutdown, wake-up, reboot

Job scheduling (time-controlled update, reboot, shutdown etc.)

On and offline configuration (immediate or on next boot)

Remote firmware update (immediate or on next boot)

Real-time online status display (showing client on/off status)

Convenient comment fields for miscellaneous information such as location, installation date, inventory number

Local network scan – full network or limited IP address range

Client registration from both server or client

Integrated configuration of smartcard reader settings

Logging System e.g. boot events and configuration changes

Partial update support

Asset Management: An automatic scan which recognizes all hardware information, licensed features and installed hot fixes

Database foundation

Java database is included but is not mandatory

Access Remote Management data through third-party applications (e.g. MS Access or ODBC interface) for further analysis and reporting

Supported databases: Oracle®, Microsoft® SQL Server 2000®, SQL Server 2005®, PostgreSQL

Most flexible profiling

Optimize profiles based on specific client firmware versions

Individual and group assignment of client profiles

Easily activate / deactivate profile parameters

Manage the complexity of your profiles, from creating single-setting profiles to complete client configurations

Client grouping

Access control on directories, profiles and thin clients for administrators and groups of administrators

Export / import of single or group profiles (XML standard)

Germany (HQ)

IGEL Technology GmbH
Hanna-Kunath-Str. 31
28199 Bremen
Germany
Tel +49 (0) 421 52094 0
Fax +49 (0) 421 52094 1499

United Kingdom

IGEL Technology Ltd
1210 Parkview
Arlington Business Park
Theale · Reading · Berkshire
RG7 4TY · UK
Tel +44 (0) 118 340 3400
Fax +44 (0) 118 340 3411

United States

IGEL Technology Inc.
2106 Florence Avenue
Cincinnati · OH 45206 · USA
Tel +1 954 739 9990
Fax +1 954 739 9991
Toll Free (US only):
+1 877 GET IGEL
info@igelamerica.com

Singapore

IGEL Technology
Care of: C. Melchers GmbH & Co.
Singapore Branch
101 · Thomson Road
24-01/05 United Square
Singapore 307591
Tel +65 6259 9288
Fax +65 6259 9111

Hong Kong

IGEL Technology
Care of: Melchers (H.K.) Ltd.
1210 Shun Tak Centre
West Tower
168-200 Connaught Road C.
Hong Kong
Tel +852 25469069
Fax +852 25596552

