



Digital Signage Media Player

NC1000

Introduction of SuperSign

Characteristics of the product (What is SuperSign?)

- LG SuperSign is a solution to allow users to transmit media and information files stored on a computer installed with SuperSign software using LAN

Differentiated special feature

- VAR(SI: System Integration), a software that can be easily used by system operators as well as private users.
- SuperSign software provides convenient User Interface(UI) and various functions for management of contents.
- Highly efficient management expenses and provides advertising effect of Digital Signage

LG SuperSign software enables convenient contents editing, preparation, distribution and management.

1. Convenience (Easy)

- Drag & Drop form of User Interface (UI)
- Transmission of simple contents and management by grouping method
- Provides templates configured in advance

2. Flexibility

- Provides player that supports various type of files such as video, audio, documents, etc.

3. Expandable

- Close range or remote management of contents and power(On/Off) are possible.

Minimum System Requirement

■ Manager PC Recommendation

1. CPU : Over pentium4 32bit 2.5GHz Core2 Duo L2 Cache 2MB
2. RAM : 2GB and above
3. HDD: 250GB and above
4. Network : 100Mbps and above
5. OS : Windows XP sp3 or Window 2003 Server
6. Graphics card memory : 1GB and above

■ Manager PC Requirements

1. CPU : Over pentium4 32 bit 2.0GHz L2 Cache 512K
2. RAM : 1GB
3. HDD: 40GB
4. Network : 10Mbps
5. OS : Windows XP sp2
6. Graphics card memory: 512MB

■ OS

Windows XP, Windows 2003 Server, Window VISTA(32bit)

Introduction of SuperSing

- Installation of universal codec and S/W

1. Microsoft Office

- MS Office 97 and above should be installed on Manager and Player for support of Microsoft Office Word, Power Point and Excel documents.
- Slide show viewing is possible if 'Show' configuration is configured on the Microsoft Power Point document.

2. Universal Codec Pack

<http://www.codecguide.com> <http://shark007.net> <http://www.free-codecs.com>

- Various types of video files can be played if Universal Codec Pack is installed on the Manger and the Player

Universal Codec Pack can be downloaded from following websites : <http://www.codecguide.com>, <http://www.xpcodec.com>

3. PDF

- For utilizing PDF document, PDF Reader should be installed at Manager and Player.

Files supported by SuperSign

- Video files supported

- File format supported : avi, wmv, mp4, mov, mkv, ts, tp, mpg, mpeg, flv

- Image files supported

- File format supported: jpg, bmp, png

- Audio files supported

- File format supported: mp3, wma, wav

- Flash files supported

- File format supported: swf

- Document files supported

- File format supported: ppt, xls, doc, pdf

Product Specifications

- General Specification

* Product specifications can be changed without notice for improvement of the product

Size	250(W) x 43(H) x 205(D) (only Set)
Weight	1.43kg (only Set)
CPU	Intel ATOM Processor 330 1.6GHz(Dual Core), FSB 533MHz
Main Memory	DDR3 1066 1024MB SODIMM type
Secondary Storage Device	SATA SSD 8GB
O/S	Window Embedded Standard

Introduction of SuperSing

■ Multi I/O Port

Chip Set	Nvidia MCP7A-ION
Serial Port	One external RS-232 Serial port
USB Port	Hi-Speed USB 2.0 port 480 Mbps rate (x5)
LAN Port	Realtek RTL8103E 10/100 Mbyte Ethernet controller
VGA / HDMI	Nvidia MCP7A-ION integrated Graphic chipset
4-in-1 Card	Secure Digital(SD) / MultiMedia Card(MMC/MMC4.0) / Memory Stick(MS/MS-Pro) / xD Memory Card
PCI Express Card Slot	wifi only
LINE OUT	supported H/P out
SPDIF (Digital audio out)	5.1 Channel supported (Depend on source signal)

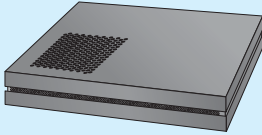
■ Operation Specification

Resolution	Maximum Resolution	1920 x 1080 @ 60Hz		
	Recommended Resolution	1920 x 1080 @ 60Hz		
Video Signal	Horizontal Frequency	30 ~ 68 kHz		
	Vertical Frequency	56 ~ 60 Hz		
	Actuator Type	Separate Sync, Composite Sync, Digital, SOG-Not supported		
Power	Rated Voltage	AC 100-240V~ 50/60Hz		
Sound output	RMS Audio Output 10W+10W(R+L)			
Wattage	Input Sensitivity 0.7Vrms			
	- Reference: 1 KHz 0.7V RMS sine wave input Spec:(9W~11W)			
	Operating Condition	Sync (H/V)	Video	LED
	Normal Mode	On/On	Active	On
	Deep Sleep Mode	Off/Off	Off	Off
	(Set = Off)			
Environment Condition	Operational Temperature	5 °C ~ 35 °C	Humidity	10 % ~ 80 %
	Storage Temperature	-20 °C ~ 60 °C	Humidity	5 % ~ 95 %

Introduction of SuperSing

Parts

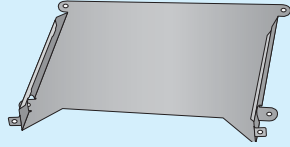
!!! Thank you very much for purchasing our product !!!



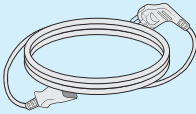
Case



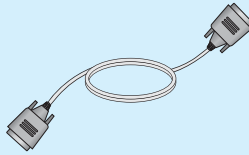
Setup program/
User Manual



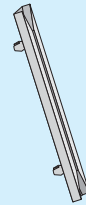
Box Guide



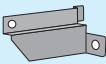
Power Cable



RS-232C Cable



Rail x 2



Handle x 2



M3, L8 x 4
(For attachment of handle)



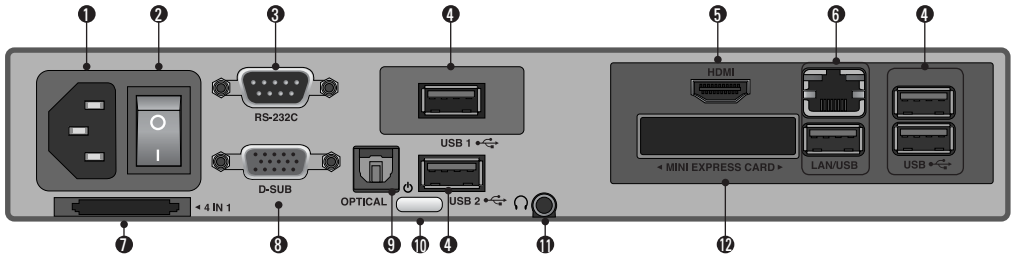
M3, L12 x 4
(for attachment of Box Guide
on the monitor)

NOTE



Parts may look different than the pictures shown here.
Make inquiries to the purchased store or purchase from electronics store or online shopping malls for purchase of accessories

Name of each part

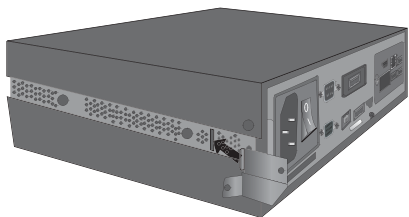


- ❶ POWER CORD IN
- ❷ POWER S/W ON/OFF
- ❸ RS-232C inlet/outlet terminal
- ❹ USB/USB1,2 input terminal
- ❺ HDMI output terminal
- ❻ LAN/USB connection terminal
- ❼ 4 IN 1 Multi-card Slot
- ❽ D-SUB output terminal
- ❾ OPTICAL
- ❿ SuperSign Power Button
- ⓫ Audio Connection Terminal
- ⓬ MINI EXPRESS CARD

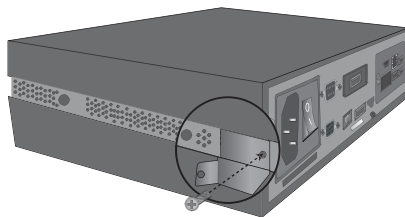
Composition of SuperSign

Installation procedure of the product

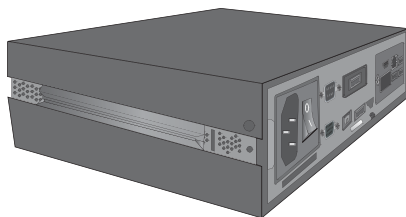
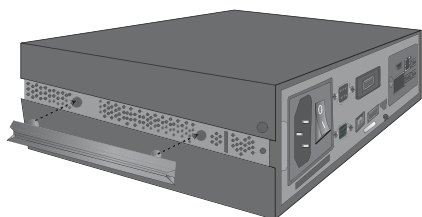
1. Please insert the handle into the groove on the side of product as shown in the picture.



2. Please secure the handle using screws as shown in the picture.

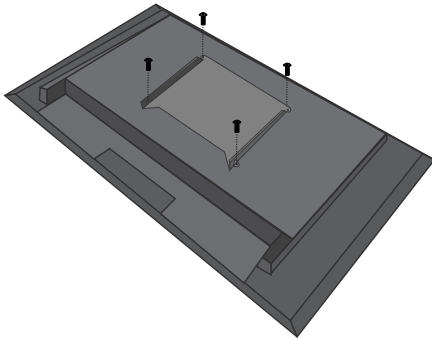


3. Please insert rails into the groove on the side of the product.

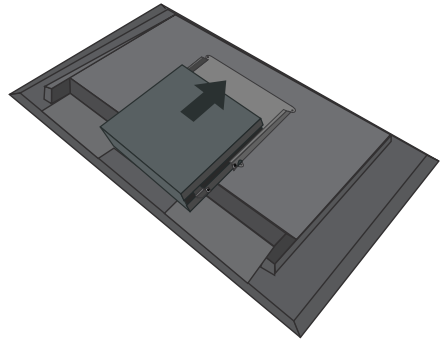


Composition of SuperSign

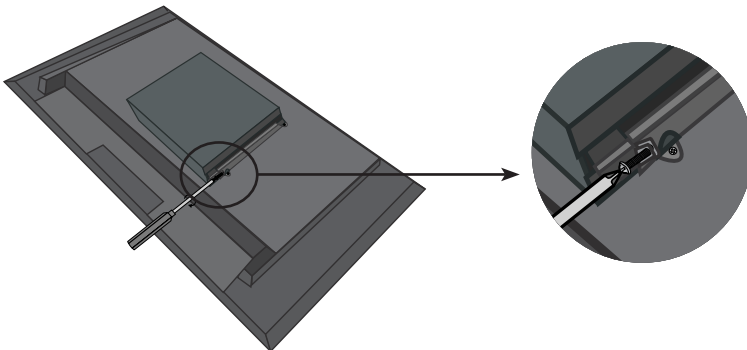
4. Please attach Box Guide on four grooves on the back of monitor as shown in the diagram using screws.



5. Please attach the case on the Box Guide as shown in the diagram.



6. Please use the screws as shown in the diagram to attach the case on Box Guide.



NOTE

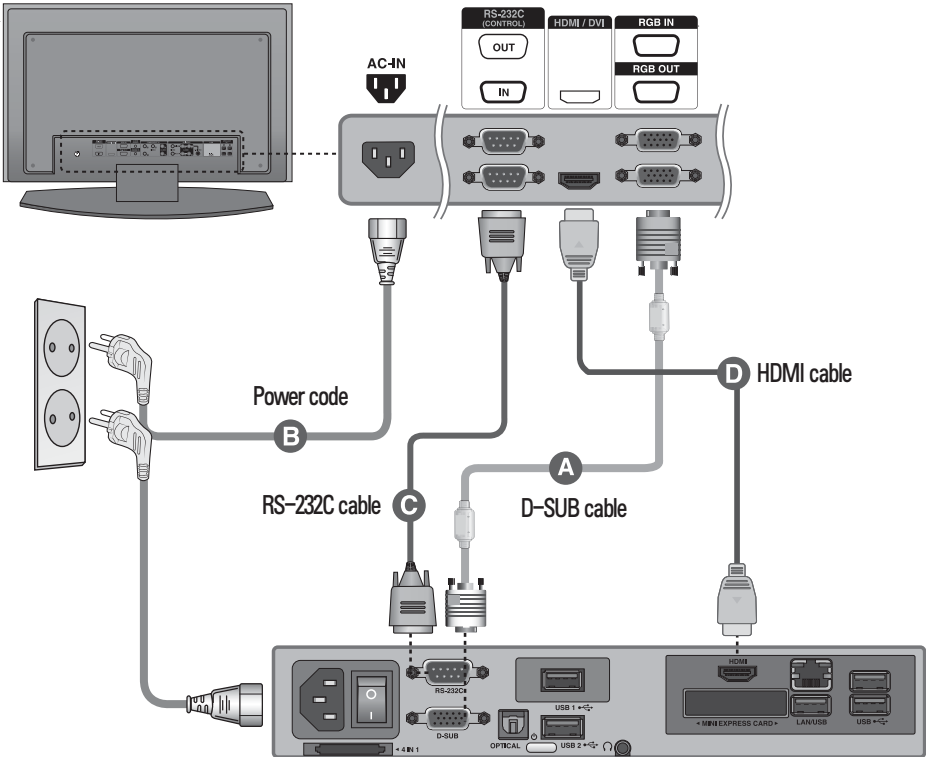


The diagram may be different than the product as it is a generalized attachment diagram.

Composition of SuperSign

Cable connection procedure of the product

- Ⓐ Connect using D-SUB input cable
- Ⓑ Power Code
- Ⓒ RS-232C cable
- Ⓓ HDMI cable

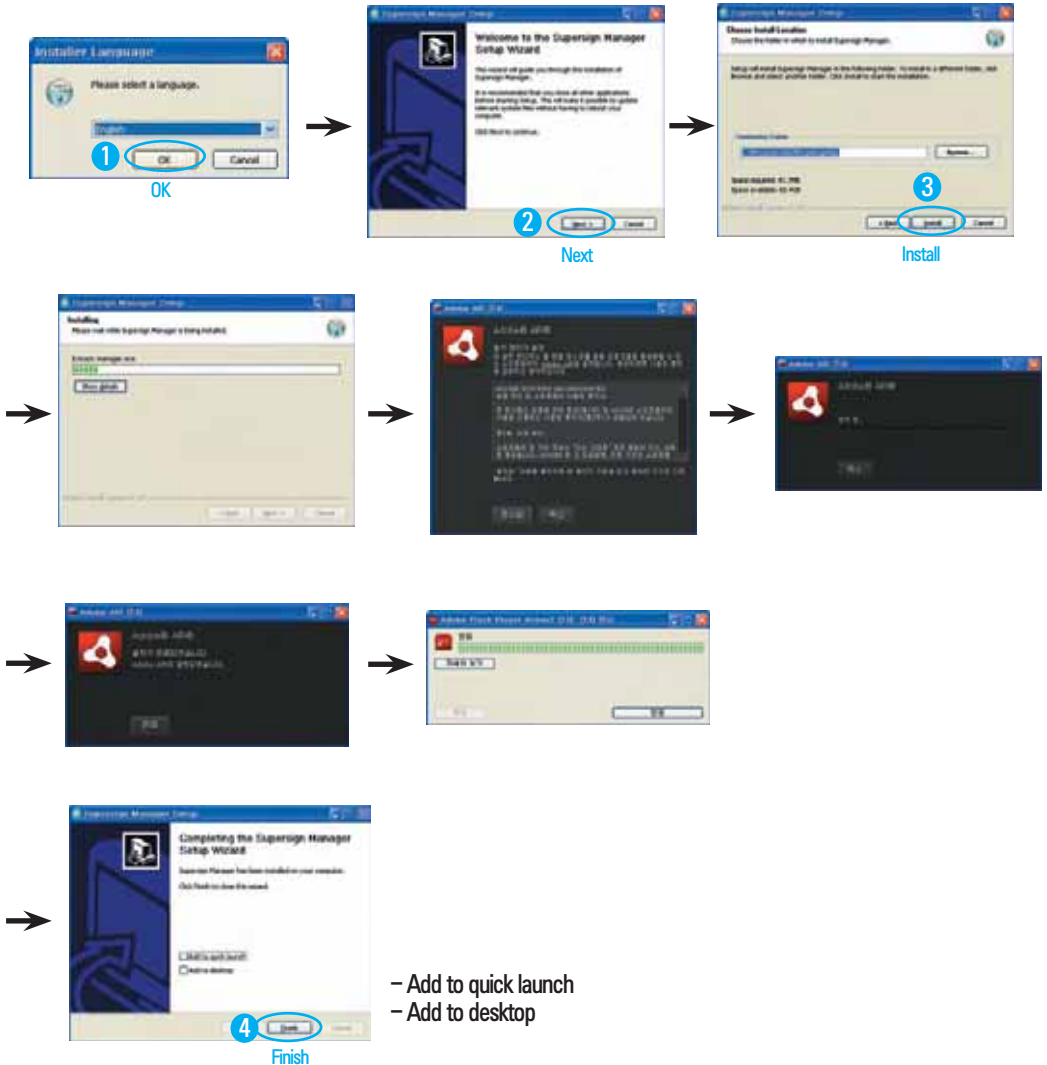


Usage of the SuperSign Manager Software

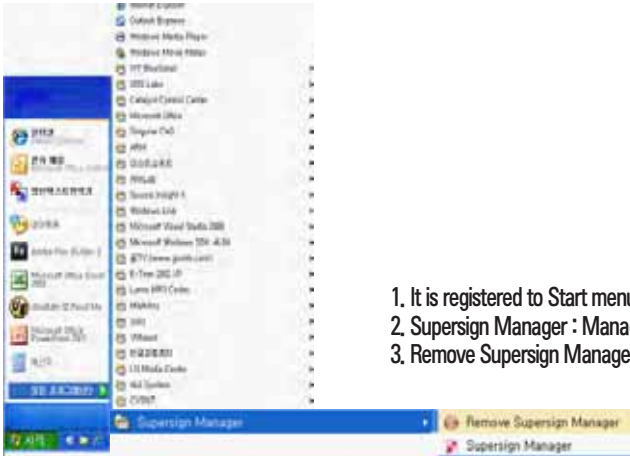
In order to use SuperSign program, install the SuperSign Manager program from the included CD and connect to user's monitor and SuperSign.

Installation of SuperSign program

1. Installation window appears automatically when you click on 'SuperSign Manager' from main screen of the CD. Please install SuperSign Manager program in the order shown below.



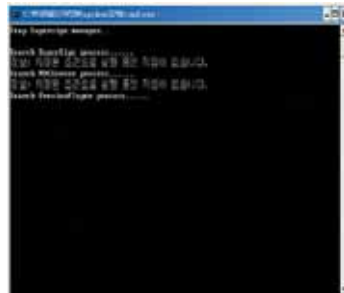
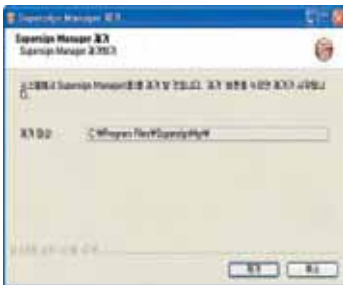
Usage of each item on SuperSign Manager Software



1. It is registered to Start menu after program installation automatically.
2. Supersign Manager : Manager program is operated.
3. Remove Supersign Manager : Removal of installed Manager program.

Removing SuperSign program

Select remove SuperSign Manager removal of installed Manager program.



Usage of each item on SuperSign Manager

SuperSign Login

1. Following login window appears when SuperSign Manger is executed.
2. Default ID is "Administrator".
ID and password is stored as the values input during initial login.
Password can be changed from File Menu.
ID is fixed as value input during initial login and it cannot be changed.
3. SuperSign Manager closes automatically when not logged in by pressing "Cancel" button.

* Select 'Logout' from File Menu to logout after logging in.
User is transferred to SuperSign Login window after Logout.



4. Scanning of connected Players occur after a successful login.
(Other functions do not work during scanning.)



5. Connected Players are shown after completion of scanning.
Selected Players that you wish to use and click on "OK" button.



- * "Cancel" : Pop-up window closes.
- * "Scan" : Restart scanning.
- * "User Setting" : Resolution, templates and layout setting can be configured.
- * Pop-up window does not appear during startup if "Do not Show this Dialog at Startup" is checked.

Usage of each item on SuperSign Manager

User setting

1. Select "OK" after selecting desired resolution.



2. Select "OK" after selecting desired template and layout setting.

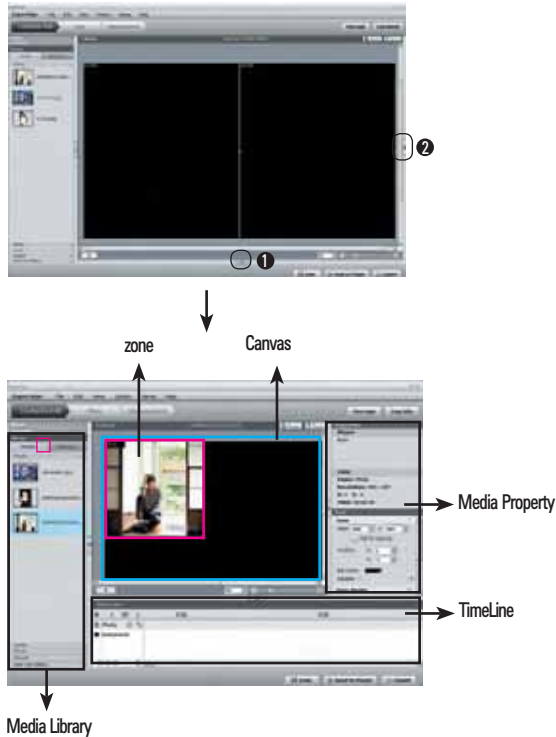


Usage of each item on SuperSign Manager


CONTENTS EDIT MENU

Main Window

1. Time Line and Zone properties windows appear when ①, ② are pressed.



* Media Library : Desired video, image, sound, flash and documents can be imported.

( : Import files by clicking on the icons.)

* Canvas : Zone of respective files are created when files registered on Media Library dragged and dropped on Canvas or Time Line.

* Zone : Exists on the Canvas and it shows a region sectionalized by properties of a specific media.

* TimeLine : Time can be edited with X-axis:Time/ Y-axis:Zone

* Media Property : Property information shown when Zone of each file type is selected.

When information is changed on properties, it is immediately reflected on Zone information.

Usage of each item on SuperSign Manager



1. Preview : Previews the contents of current Canvas.

2. Save : Creates Contents by storing details of current Canvas.

3. Send To Player : A function to play current contents of the Player by immediately distributing them. (Contents information and Player information can be viewed by selecting a Player to play back and clicking on "OK" button.)

* Player Scan pop-up window appears if there are no connected Player and Players can be scanned.

4. Export : A function to play back contents edited from a Player not connected to a network.

* Click on "Export" after creating contents.

* Input name of a folder to store the contents. Folder is created on designated location when "export" is clicked.

* Media files and content information file used in the contents are stored in the folder created.

* Play back stored files from a player by using removable disk, etc.



5. Time Setting

* Infinite Repeat Time : Infinite Repeat Time : Repeat play back until a newly scheduled contents are executed.

* Duration Time : Play back of contents for configured duration from current time.

Usage of each item on SuperSign Manager

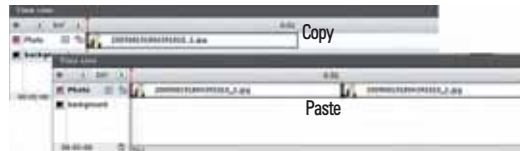
Creation of Contents

1. Zone of respective file is created when a file registered on Media Library is dragged and dropped on Canvas or Time Line.
* It is added to one single Zone if several files are selected, dragged and dropped simultaneously.
2. Zone : Only a Zone is created when Canvas is clicked after selecting this button. Files can be inserted into the created Zone by dragging and dropping files onto the Zone.
Text : Text Zone is selected to enable input of text when Canvas is clicked after selecting this button.
3. Canvas enlargement / reduction function : + enlargement, -reduction
4. File name and resolution of Canvas is shown



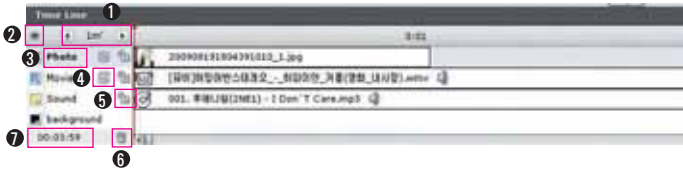
Contents Copy

1. Copy : Copy contents by selecting File Menu > Edit > Copy or using Ctrl + C shortcut key.
2. Paste : Paste copied contents by selecting File Menu > Edit > Paste or using Ctrl + V shortcut key.



Usage of each item on SuperSign Manager

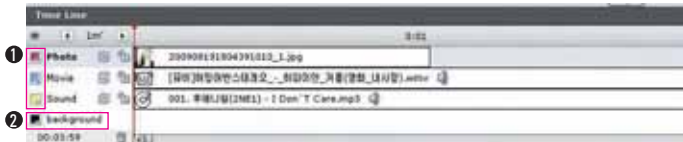
Configuration of TimeLine



1. Gap of time axis on Time Line can be adjusted. Intervals are 1,10,30 minutes and 'upper time limit' is 12 hours.
2. : Function to display/hide each color properties and icon information from the screen for classification of Zones.



3. Zone name can be changed by double-clicking on the Zone. Zone name is created depending on the type of media by default.
4. : Repeated play back for entire duration occurs when repeat function is selected. Default setting is "on".
(On: , Off:)
5. : A function to fix a region for a Zone on the Canvas zone. Default setting is "off".
Zone cannot be selected from Canvas when it is set to "On". (On: , Off:)
6. : A Zone is deleted when it is clicked after selecting a Zone or a Zone is selected, dragged and dropped onto .
7. Shows entire duration of the Canvas. It follows duration of the longest Zone. It also defines play back duration of repeat function.



1. Shows color property of Zones. The user can directly designate a color.
 2. Background : Only 1 file can be inserted as a background of Canvas.
- *When dragging and dropping on to the TimeLine, it must be dropped on the background region.

Usage of each item on SuperSign Manager

Contents Properties

■ 미디어 파일



Shows information of Shows 'None' when there are no connected Players

Resolution information

Background Color assignment
Background Picture assignment (Limited to pictures registered on the Media Library)

〈When background is selected〉



Shows information of Shows 'None' when there are no connected Players

Shows information of the Zone created

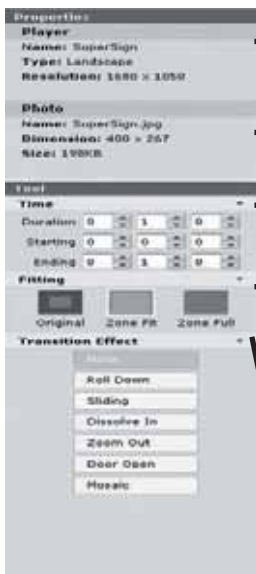
A Function to adjust size, location and transparency of background color of a Zone

A function to adjust color and thickness of outline of a Zone

Configuration of priority order of a Zone (Very front/One step forward/One step backward/Very back)

Zone set repeatedly in canvas

〈When a Zone is selected without selecting a Media〉



Shows information of Shows 'None' when there are no connected Players

It shows media information selected. Name, resolution, size

Set media play time selected

image expression method setting
Original : express as the original size

when image is larger than Zone it shows to be fit to zone
Zone Fit: it shows to be fit to Zone
Zone Full: it is indicated as Full at Zone

Provide effects to image

〈Photo〉



Shows information of Shows 'None' when there are no connected Players

It shows media information selected. Name, resolution, size, play time

Set media play time selected

image expression method setting
Original : express as the original size

when image is larger than Zone it shows to be fit to zone

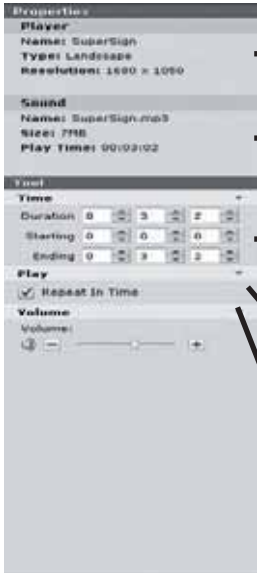
Zone Fit: it shows to be fit to Zone

Within the set media play time, the repeating play of the file setting

Volume Control

〈Movie〉

Usage of each item on SuperSign Manager



Shows information of Shows 'None' when there are no connected Players

It shows media information selected, Name, resolution, size, play time

Set media play time selected

Within the set media play time, the repeating play of the file setting

Volume Control

<Sound>



Shows information of Shows 'None' when there are no connected Players

It shows media information selected, Name, resolution, size, play time

Set media play time selected

Within the set media play time, the repeating play of the file setting

<Flash>



Shows information of Shows 'None' when there are no connected Players

It shows media information selected, Name, resolution, size

Set media play time selected

<PDF/Office>

Usage of each item on SuperSign Manager

■ Service



<Web>

- Shows information of Shows 'None' when there are no connected Players
- Information of URL to be linked
- Set media play time selected
- URL to be linked can be changed



<Text>

- Shows information of Shows 'None' when there are no connected Players
- Set media play time selected
- Setting for text condition
Font : text form
Size : text size
Color : text color
Style : Bold, Italic, Underline
Align: left array, central array, right array
Line Space : Line gap setting
Spacing : Letter gap setting
- Motion: Configuration of text movement direction
Speed: Configuration of text movement speed



<RSS>

- Shows information of Shows 'None' when there are no connected Players
- Information of URL to be linked
- Set media play time selected
- Setting for text condition
Font : text form
Size : text size
Color : text color
Style : Bold, Italic, Underline
Align: left array, central array, right array
Line Space : Line gap setting
Spacing : Letter gap setting
- Motion: Configuration of text movement direction
Speed: Configuration of text movement speed
- URL to be linked can be changed
- Gap setting between each RSS Title
Cycle setting for RSS update

Usage of each item on SuperSign Manager



Shows information of
Shows 'None' when there
are no connected Players

Set media play time
selected

Setting for text condition
Font : text form
Size : text size
Color : text color
Style : Bold, Italic, Underline

Configuration of
expression method
Year.Month.Day
Year/Month/Day
Month/Day

<Date>



Shows information of
Shows 'None' when there
are no connected Players

Set media play time selected

Setting for text condition
Font : text form
Size : text size
Color : text color
Style : Bold, Italic, Underline

Configuration of
expression method
AM Hour:minute:second
Hour:minute:second

<Time>

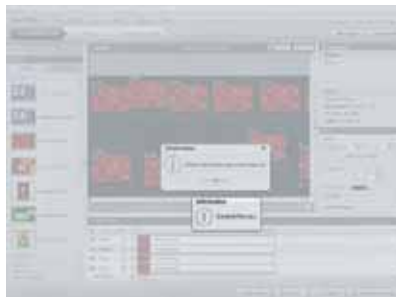
Usage of each item on SuperSign Manager

Configuration of service function

1. URL : Add = Web Zone is created when clicked after entering a URL.
Reset = Stored URL disappears.
2. RSS Feed : Add = RSS Zone is created when clicked after entering a URL.
Reset = Stored URL disappears.
3. Widget: Date Add = Widget Zone is created when clicked after entering a URL.
Reset = Stored URL disappears.
4. Date/Time : Date Add = Date Zone is created.
Time Add = Time Zone is created



Others



1. There are limitations to number of play back per media on a Player.
2. When 'Preview' or 'Send to Player' is attempted after creating a Zone with number of files exceeding maximum play back limit, a notification Pop-up windows appears and only maximum number of play back files are played back.
3. 4 Video files / 10 Audio files / 10 image files(including background) / 20 flash files / 40 text files / 10 web pages / 4 Office files (sum of all excel / ppt / word files) / 10 PDF files
4. Media which is linked to office file can be impossible to play in Player.

Usage of each item on SuperSign Manager

PLAN MENU

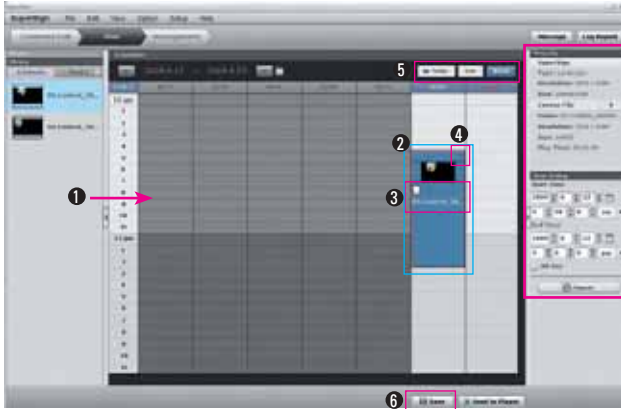
Main Plan Window



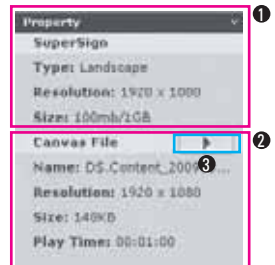
1. Information of connected Player can be viewed.
2. List of created contents and media files can be viewed from 'Contents edit'.
3. Units of displayed time can be selected. (10minutes/ 30minutes/ 1hour are supported.)
4. Contents and media files can be input into desired date.
- * Schedule input into past dates is not possible and therefore, it is disabled.
5. Property screen regarding a Plan appears when clicked.
6. Schedule can be configured within 6months of current time.

Usage of each item on SuperSign Manager

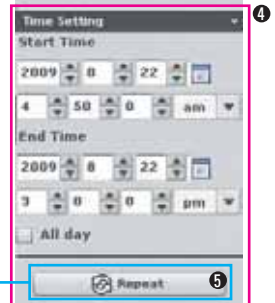
Plan configuration



1. Create Time Cell by drag & drop after selecting contents or media files.
2. Play back time of Time Cell can be adjust by selecting a Time Cell and dragging each corner of the Time Cell
3. It is name of selected content for media file.
4. Time cell deletion function, (Warning Pop-up window appears when deletion is selected)
5. Week View : Shown on the screen as 7 day units.
Day View : Screen extends into 1day units and detailed content information is shown.
Today : Move to today's date when selected.
6. Changed schedule is applied when 'Save' is clicked after changing the schedule.



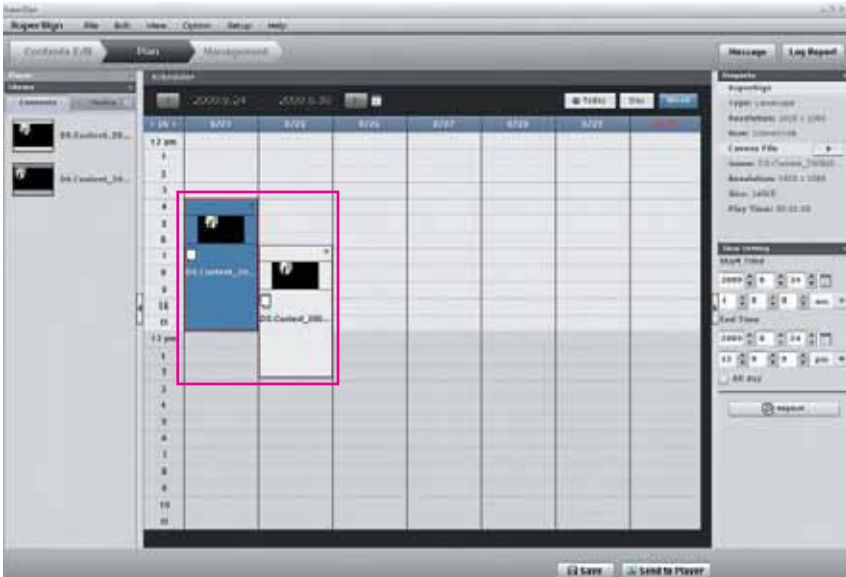
1. Shows property information of selected Player such as name of the Player, etc.
2. Shows property information of contents or media files inserted into schedule.
3. Preview Function, Only provided during Content selection.
4. Time Setting value can be manually input.
5. Configures repetition cycle of the schedule.



1. It is a function to configure repetition cycle of the schedule.
2. Firstly, configure repeat duration.
3. Configure days to add repeated schedule during selected duration.
4. It is repeated for entire duration when 'Everyday' is selected.
5. Repeated schedule is applied and displayed on the Plan when "OK" button is pressed..

Usage of each item on SuperSign Manager

Contents Copy



1. Select a Time Cell
2. Shape of mouse point is changed and enters into copy mode when **Ctrl + C** is pressed.
3. Paste copied Time Cell by clicking on desired location..
4. Exit from copy mode by pressing "ESC" key.

Usage of each item on SuperSign Manager

MANAGEMENT MENU

Main Management Screen



<Initial Management Screen>

1. Shows currently connected Players.
 2. Contents and media file lists created from 'Contents Edit' can be viewed.
 3. Information and Control function. However, information is not shown in case of a group.
- *  : Group  : Player  : Display Device

4. Scan : Rescans Players.
Add Group : Creates a new group.
Release : Deletes selected group.
Tree : Tree view mode.
List: List view mode.
- * Default is Tree view mode.

5. Name can be changed by double clicking on a group or a player.

Usage of each item on SuperSign Manager

Management configuration



1. Select a Player.
2. Drag & drop by selecting contents or media files.
3. Contents and Player information to be played back can be viewed.

* Time Setting

- Infinite Repeat Time: Repeated play back until a newly scheduled content is executed.
- Duration Time : Play back of contents from current time for configured duration.



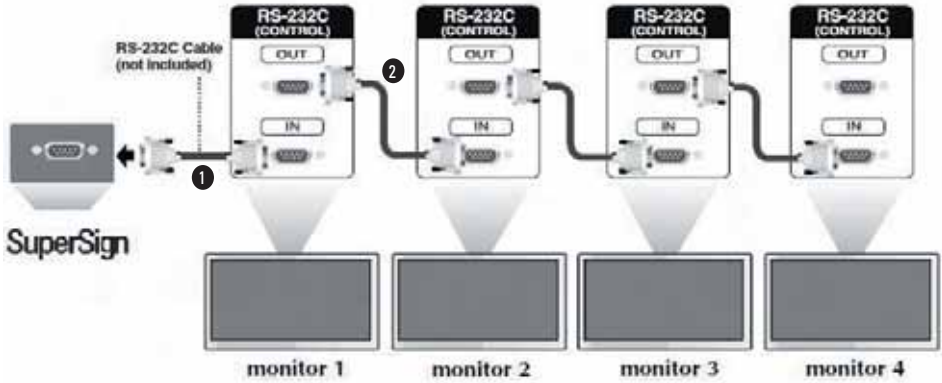
A function for combined management of Players and Displays included in the Group.
Controllable functions can be selected by selecting each item's Tab.



A function to control the Players.
Controllable functions can be selected by selecting each item's Tab.

Usage of each item on SuperSign Manager

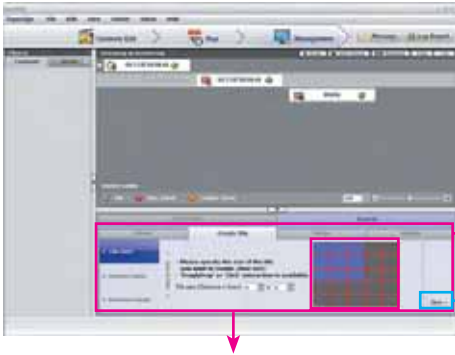
Tile Mode Control Cable



Usage of each item on SuperSign Manager

Control Tile Configuration

1

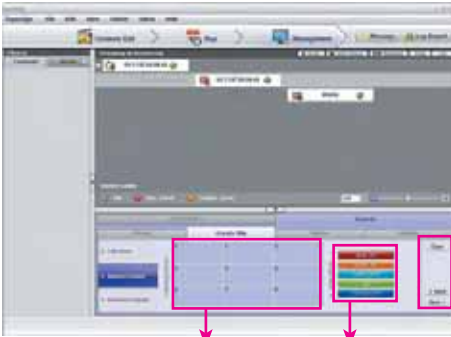


Tile size can be configured with mouse drag and clicks.

Can go to the next step.

A tab to configure Tile Mode of the display connected to a Player.

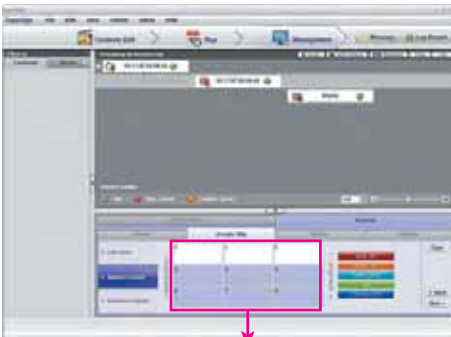
2



Control to go to the next step is positioned.

Display is arranged by configured Tile Size Control to configure each input is positioned.

3



Selected control is activated in while color when each display is selected.

Usage of each item on SuperSign Manager

4



Input value is configured when configuration is done only on active display.

5



Monitor location can be configure by Drag & Drop.

6



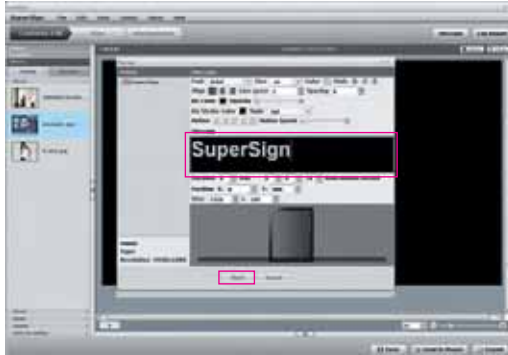
Complete configuration of Tile Mode using 'Apply' button.

Monitor location can be configured using Drag & Drop.

Usage of each item on SuperSign Manager

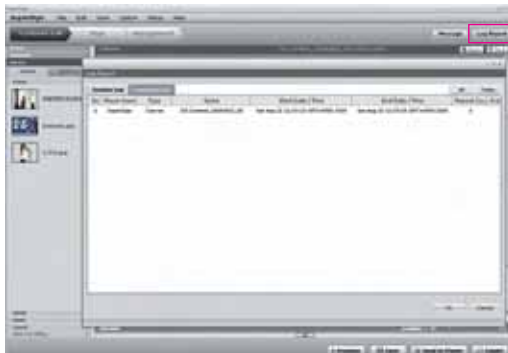
Message

1. A function to display messages in cases of situations such as notice, information and emergency.
2. Message is immediately transmitted to the Player when "Send" is input after writing the message.



Log Report

Provides log information of system and contents.



Usage of each item on SuperSign Manager

File Menu

1nd Depth	2nd Depth	3rd Depth	Access Right			Description
			Contents Edit	Plan	Management	
File	Canvas New		●			Contents Edit Wizard Start
	Open		●			Contents list / Schedule list
	Close		●			변경된 사항이 있다면 Contents 저장하고 닫을지 저장하지 않을지 Alert 띄움. 이미 저장된 상황이면 바로 닫히고, Player list 선택 상황과 Library 정보는 그대로 됨.
	Save		●	●		저장하기 Window Popup 기 저장 완료 후에는 덮어쓰기 저장 됨
	Save as		●			Save as Window Popup
	Save for Template		●			Save for Template Window Popup
	Export		●			Export Window Popup
	Send to Player		●	●		Player에 배포하기
	Log out		●	●	●	사용자 Log In 후 활성화
	Password Change		●	●	●	사용자 Password Change
	Exit		●	●	●	프로그램 닫기

File Menu

1nd Depth	2nd Depth	3rd Depth	Access Right			Description
			Contents Edit	Plan	Management	
Edit	Cut		●	●		잘라내기
	Copy		●	●		복사
	Paste		●			붙여넣기
	Delete		●	●		지우기
	Edit in Canvas			●		DS Contents 선택 시에 메뉴 Plan : 스케줄에 놓여진 DS Contents 선택 후 Edit로 이동하여 편집
	Planning Contents		●			Planning 선택 시에 메뉴 Contents Edit : 진행 중인 Contents를 자동 저장 후 Plan 화면으로 바로 이동하여 스케줄링 (미 저장 시, 저장 필업 제공)
	Add Group				●	
	Delete Group				●	

View Menu

1nd Depth	2nd Depth	3rd Depth	Access Right			Description
			Contents Edit	Plan	Management	
View	Zoom	150%	●		●	150%
		120%	●		●	120%
		100%	●		●	100%
		80%	●		●	90%
		60%	●		●	60%
		50%	●		●	50%
		30%	●		●	30%
	Preview		●			Contents Edit : 미리보기
	Show Wizard		●	●	●	Start Wizard 보기 : Start Wizard 더 이상 안보기 상태 시 활성화
	Hide Wizard		●	●	●	Start Wizard 안보기 : Start Wizard 보기 상태 시 활성화
	Contents Edit Window	Timeline	●			Timeline 보이기/감추기
		Player Template Library	●			Player/Template/Library 보이기/감추기
		Property Tool	●			Property/Tool 보이기/감추기
	Plan Window	Player Library		●		Player/Library 보이기/감추기
		Property TimeSetting		●		Property/Tool 보이기/감추기
	Management Window	Library			●	Library 보이기/감추기
Information Control				●	Information/Control 보이기/감추기	

Usage of each item on SuperSign Manager

Option Menu

1nd Depth	2nd Depth	3rd Depth	Access Right			Description
			Contents Edit	Plan	Management	
Option	Scanning Start		●	●	●	Player Scanning 시작
	Contents Edit	Directory Info	●	●	●	포털 내 Media Library Directory 정보 / Export Data Directory 정보
		Directory sync cycle	●	●	●	Directory 동기화 주기 설정 : 매일 Directory 동기화 시간 설정 : 00:00:00 (24시간 이내 사용자 입력) Sync Start 버튼 클릭 시 바로 동기화 시작함.
	Management	mail Notification	●	●	●	Rog report를 전송할 관리자 E-mail 정보 설정

Setup Menu

1nd Depth	2nd Depth	3rd Depth	Access Right			Description
			Contents Edit	Plan	Management	
Setup	Server		●	●	●	서버 정보
	Initialization		●	●	●	SuperSign 설정 초기화

Help Menu

1nd Depth	2nd Depth	3rd Depth	Access Right			Description
			Contents Edit	Plan	Management	
Help	Help Contents		●	●	●	Manager/Player 도움말
	S/W Information		●	●	●	버전 정보

Player software usage of SuperSign

Login Screen

- 1 When entering SuperSign, it enters into a menu to configure UI of SuperSign Player.
(Closes automatically after 5 seconds)



- 2 Enter password.
Default password is "0000" and it can be changed.



- 3 Screen that appears when an incorrect password is entered.



〈When incorrect password is entered〉



〈When nothing is entered〉

Player software usage of SuperSign

Network

- Player ID Mode : A menu to configure network connection related information.
First condition is Dynamic IP.



- ① Setting the Player IP as "Player IP Mode"
- ② When setting as Dynamic IP, IP assigns automatically.
- ③ Player Name can be put in Dynamic IP
Other items be arrangement disable state.
- ④ Player Name is able to put by number/English.
- ⑤ When input is done and click "Save", setting condition is saved.



- ① It is the same as Dynamic IP setting.
- ② Default value of each item is "0.0.0.0".
The first condition of Player Name is Mac Address of Player.
However, disabled items become active and values can be entered.
- ③ Only numerical values can be entered for IP Address/ Gateway/ Subnet Mask/ DNS Server.
- ④ When input value is larger than 255 and "Save" is clicked, value of '0' is stored.
- ⑤ When input is done and click "Save", setting condition is saved.

Player software usage of SuperSign

- Manager Discovery : Menu for setting server IP.
The first condition is Auto Discovery.



- ① IP assigns to Auto Discovery automatically.
- ② Click "Save", setting condition is saved.



- ① "Manual Discovery" is a menu for setting server IP directly.
- ② Default value of IP Address is "0.0.0.0"
- ③ Only numerical values can be entered.
- ④ When input value is larger than 255 and "Save" is clicked, value of '0' is stored.
- ⑤ Click "Save", setting condition is saved.

Player software usage of SuperSign

Display

Menu for setting display form.
Lower menu is Landscape and Portrait.
At first it is set as Landscape.



<Landscape>



<Portrait>

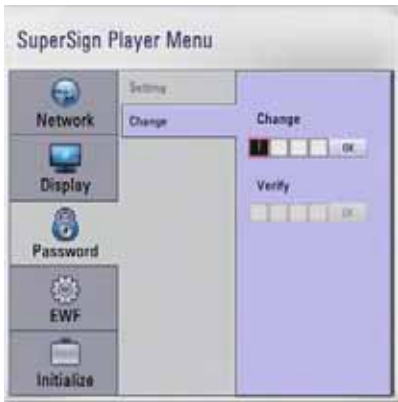
Player software usage of SuperSign

■ Password

■ Setting



■ Change



- ① It is a menu to change password.
- ② Password provided initially can be changed.
- ③ Enter desired password on 'Change' field and press "OK" to save.
- ④ Input the changed password at Verify menu to check the password.
- ⑤ Input the password at Verify and click "OK", then password will be saved.

* Screen that appears in case of password change error.

〈When nothing is entered〉



〈When 'Change' value and 'Verify' value is different〉



〈When password change is completed〉



Player software usage of SuperSign

EWF



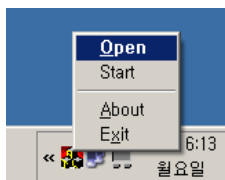
- ① EWF is technology to prevent abnormal Writing.
- ② The first input is Enable.
- ③ In case of that you change the content of Drive like to install a program or to change the window setting, set as Disable and operate it.
- ④ When changing the setting from Disable to Enable, you should re-boot the Window for applying the setting condition.

S/W Initialize



- ① It is a menu to initialize configuration values of the Player Menu.
- ② First input is "No"

Others



Limitation of Windows embedded XP

Limitation related to the installation of Microsoft Office

			WEPOS (SP3)	Windows Embedded POSReady	Windows XP Embedded (SP2)	Windows Embedded Standard
Excel	English OS	2003	0	0	0	0
		2007	0	0	X	0
	Korean OS	2003	0	0	0	0
		2007	0	0 (Though installed, the software will generate an error during the update)	0	0
PowerPoint	English OS	2003	0	0	0	0
		2007	0	0	0	0
	Korean OS	2003	0	0	0	0
		2007	0	0	0	0
Word	English OS	2003	0	0	0	0
	Korean OS	2007	0	0	0	0

Embedded limitation of Microsoft Korean XP (Korean)

- When you run Full Screen (Alt+Enter) from the DOS window, the font can be broken.
- When saving the file with a different name from the Print window, the name of the menu window is displayed in English
- When moving to the detail menu item of Control panel etc., some menus are displayed in English (HyperTerminal, Language setting by country etc.)

	Windows Embedded POSReady	WEPOS (SP3)	Windows Embedded Standard
Office 2003	Normal installation/Operation	Error during installation (Same as existing) Installation is completed after ignoring the error	Error during installation (Same as existing) Installation is completed after ignoring the error
Office 2007	Normal installation/Operation	Normal installation/Operation	Normal installation/Operation

※ English versions, Office 2003/Office 2007, are all normally installed